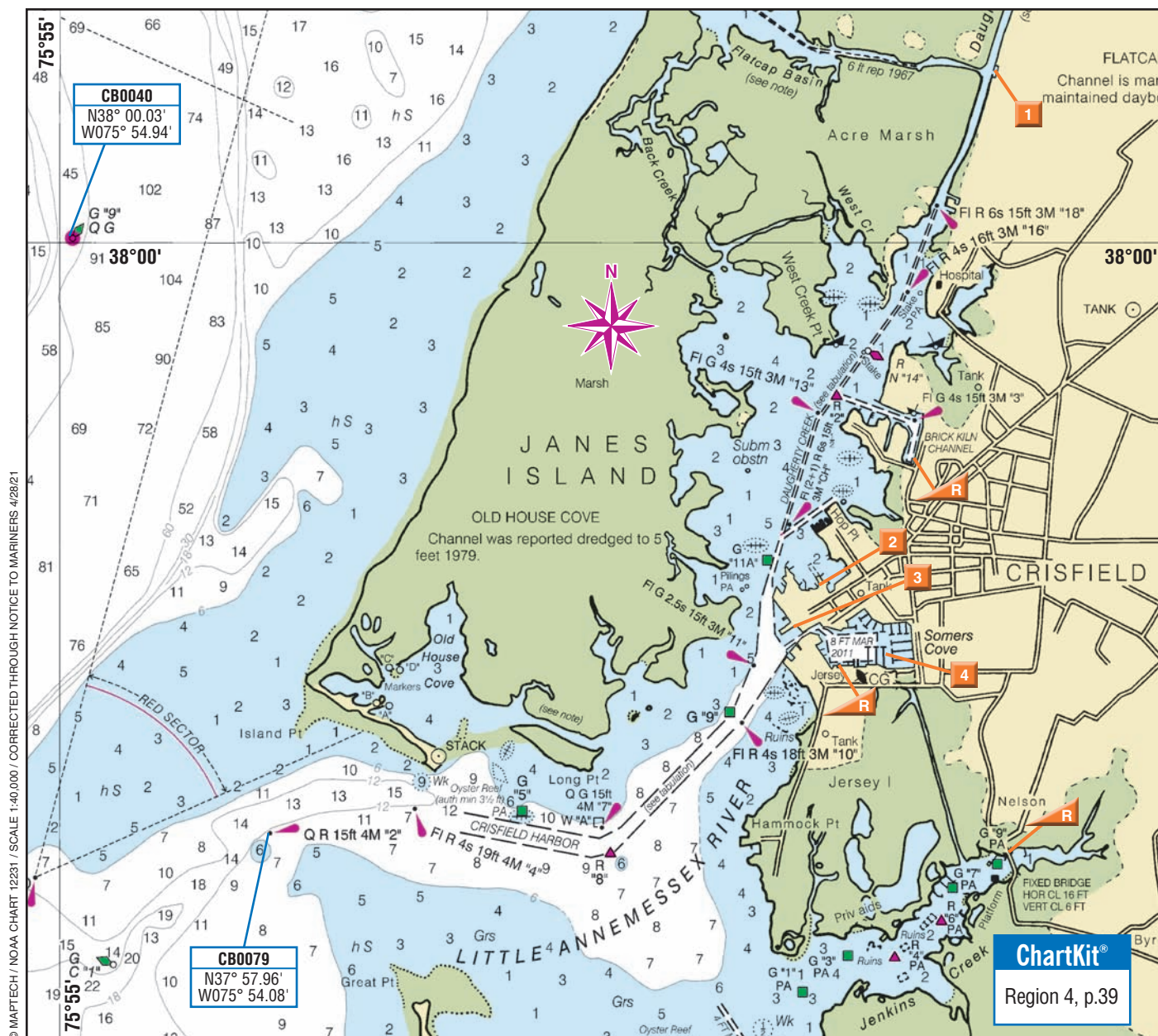





# Crisfield



<div><p>Info: 800-395-2628 Dispatch: 800-391-4869 Or Download the BoatUS App</p><p><b>Marine Facilities and Services</b></p></div>		DOCKAGE		SERVICES		SUPPLIES		AMENITIES		 <p>1-800-824-5372 <a href="http://www.spursmarine.com">www.spursmarine.com</a> Line Cutter MasterCard / VISA / Discover / AmEx Internet / Restaurant / Snack Bar Hotel / Pool / Tennis / Golf Marine / Laundry / Pumpout Groceries / Ice / Bait Fuel Brand Gas / Diesel</p>							
		Approach / Dockside Depth in Feet at MLW		110V ♦ 220V ▲ 3 Phase ■		Repairs: Prop / Sail / Rigging / Gas		Restrooms / Showers / Laundry / Pumpout		Internet / Restaurant / Snack Bar							
		Seasonal / Year-round		Hookups: Water / Cable TV		Diesel / Wood / Fiberglass / Electronics		Marine / Groceries / Ice / Bait		Hotel / Pool / Tennis / Golf							
		Maximum LOA		Ramp / Dinghy Dock / Launch Service		Rail / Lift / Crane / Trailer: Capacity (tons)		Gas / Diesel		Fuel Brand							
		Offers Transient Slips / Moorings		Ramp / Dinghy Dock / Launch Service		Rail / Lift / Crane / Trailer: Capacity (tons)		Gas / Diesel		Fuel Brand							
Total Number of Slips / Moorings		Ramp / Dinghy Dock / Launch Service		Rail / Lift / Crane / Trailer: Capacity (tons)		Gas / Diesel		Fuel Brand									
Monitors / Working VHF Channel		Ramp / Dinghy Dock / Launch Service		Rail / Lift / Crane / Trailer: Capacity (tons)		Gas / Diesel		Fuel Brand									
1	Janes Island State Park	410-968-1565	32/	25			R				IB	R		MV			
2	Sea Mark Marine & Crisfield Propeller	410-968-0800				W	♦▲50	D	L50	All		M	R	MVA			
3	Crisfield Municipal Wharf	410-968-1333															
4	Somers Cove Marina	410-968-0925	16/9	515/	Y/	150	9/12	W	♦▲100	R		GD	MIB	All	P	IR	All

Information in these listings is provided by the facilities themselves. An asterisk (\*) indicates we have confirmed the facility's existence, but it did not respond to our request for updated information.

**C**risfield is a town that was quite literally built on oyster shells. It was originally called Annemessex, whose Native American meaning is “bountiful waters.” The name fits.

Benjamin Somers was first granted 300 acres here in 1663. Boat captains and crew finding refuge here kept referring to the port as “Somers Cove,” and the designation stuck. Now you know how the huge marina here got its name.

In the mid-19th century oyster beds were discovered during a coast and geodetic survey of the area. The place was a quiet fishing village until John Woodland Crisfield, then president of the Eastern Shore Railroad, headed up efforts to extend the tracks from Salisbury to town, bringing mail in and taking oysters out.

That move opened up access to lucrative restaurant markets in Philadelphia and New York, lit a fire under the local seafood packing industry and set off an economic boom. In 1866 Annemessex was incorporated as Crisfield to honor the man behind the success.

In 1872, the marsh was filled in with oyster shells, of which there were very many tons. The harvest, brought in by a fleet of local tongers, filled 18 boxcars each day. In time, however, this rapacious harvesting decimated the oyster reefs that once filled (and filtered) the surrounding waters, leading to an economic bust.

It wasn't long before ambitious fishermen turned to crabs to restore fortunes, marketing Crisfield as the “Crab Capital of the World.” In one art form or another, the crustacean is everywhere, even on the town's water tower and wind turbine. Actual crabs — steamed, caked, baked, casserole and more — figure in virtually every eatery but the ice cream parlor, although we bet it won't be long before a hot fudge crab sundae goes viral.

These days the watermen's fleet is almost as depleted as the oyster beds. Recreational boats occupy slips that not so long ago held mostly deadrise bateaus, and condominiums loom over the waterfront. But look a little closer and you will see that the town is still a tightly knit water-oriented community. Main Street runs to the harbor. The town dock is a community hub where ferry captains (watermen running beamy workboats) hang out between trips to Smith and Tangier islands. In addition to mail, cargo and visitors, the ferries bring the islands' children to the mainland to school in the morning and take them back home in the evening.

### Things to See and Do

Crisfield is flat, which makes it easy to walk or pedal around. Rent bikes at the state-owned and commission-run **Somers**



Like much of the town, Crisfield's Municipal Wharf, center, is built on the foundation of oyster shells.

**Cove Marina** (410-968-0925). **Shore Transit** (443-260-2300) has a bus stop at Somers Cove that can get you around town or as far afield as Princess Anne and Salisbury. At the western edge of town, the municipal wharf is where several ferries head to **Smith Island**, a 45-minute ride. Some may also take you to **Tangier Island**; inquire at the dock. Many of the inhabitants of the islands can trace their roots back to the 16th century and they speak in their own dialect, which has many ties to Elizabethan English.

Kayaks and canoes may be rented at **Janes Island State Park** (410-968-1565), on the north side of Crisfield in Somerset County. Paddle along **Daugherty Creek Canal** or take your own boat through, depending on draft. The park has water trails, crabbing and fishing areas, and a mile-long land path.

Crisfield bursts with festivals, many of which are based on that beloved decapod. Memorial Day weekend's **Soft Shell Spring Fair** is followed in mid-July by the **J. Millard Tawes Crab and Clam Bake**, named in honor of the favorite son who became the 54th governor of Maryland. It features local in-season eats that draw, in addition to hungry visitors, glad-handing political hopefuls. Labor Day weekend brings the **Hard Crab Derby & Fair**.

Stop into the **J. Millard Tawes Historical Museum** (410-968-2501), which is located on the waterfront at Somers Cove. Exhibits trace the geologic beginnings of Chesapeake Bay and the Lower Shore's past, including seafood harvesting and processing. They also examine Native American and Colonial life, and the evolution of a distinctly American art form — decoy carving and painting — practiced so skillfully by Crisfield's native sons, Lem and Steve Ward.

The museum is the starting place for the **Port of Crisfield Escorted Walking Tour**. Learn more at the **Somerset County Visitor Center** (800-521-9189) and the **Crisfield**





The north side of the port is where you'll find Sea Mark Marine & Crisfield Propeller, center. The flat terrain here makes it easy for biking and walking.

**Area Chamber of Commerce** (410-968-2500), which abut Sea Mark Marine at 906 West Main Street. They can also tell you what's happening and where to eat when you're in town.

## Restaurants and Provisions

Take advantage of the technical expertise and available supplies while you're here. At the base of the water tower near Somers Cove Marina, **Goldsborough's Marine** (709 W Main St.; 410-968-0852) has been providing top-notch service for half a century. This family-run shop sells props, outboards, sunglasses, hats, charts and other items you may have lost on your travels — plus a ton more. About 100 yards away, the family at **Sea Mark Marine & Crisfield Propeller** (410-968-0800) has been repairing boats for more than 60 years.

For food, well, guess what's on the menu? We'd give you a hint but all you have to do is open your eyes. The world's "Crab Capital" has a number of places where you can get your fill of the crustaceans any way you want 'em.

**Linton's Crab House and Deck** (4500 Crisfield Hwy.; 410-968-0127) offers really good meals to eat there or to-go. You can also buy fresh seafood and take it back to the boat to cook it yourself. **Captain's Carryout** (947 W Main St.; 410-968-1305) also sells crabs, crab cakes, shrimp, burgers and subs.

**The Crab Place** (504 Maryland Ave.; 877-328-2722) is a large internet seafood shipper that also promotes several

"Crab & Cruise" parties, taking guests out for a sunset sail with raw bar, beer or BYOB.

BYOBFF — bring your own best friend — to **Red Shell Shanty** (443-614-2397) at Somers Cove Marina. Actually, you're likely to meet new friends at this tiki bar, where you can nosh on sandwiches and snacks.

The charming **Watermen's Inn** (901 W. Main St.; 410-968-2119), with a nice little front garden and a couple of outdoor tables, is open Thursday through Sunday for dinner. The owners are Johnson & Wales grads, who prepare things like scampi in wine and butter, the day's fish catch, rib eyes and crabs (of course). Save room for dessert.

If you have a sweet tooth, try **Smith Island Baking Company** (45 W. Chesapeake Ave.; 410-425-2253). We discovered that their decadent cakes are suitable for breakfast. **Gordon's Confectionery** (831 W. Main St.; 410-968-0566) opens at 4 a.m. with coffee and breakfast for fishermen and doesn't close until 8 p.m.

At **Café Milano** (103 N. Fourth St.; 410-968-1082) you can get all the Italian you could want — pasta and pizzas with toppings galore. It offers eat-in, carry-out and delivery.

Speaking of things to take away, **Big Willey's Drive Thru** (3 S. Seventh St.; 410-968-9010) is a unique convenience store with soda, beer and "food stuff," all available from the comfort of one's car. We know you're on a boat, but it's worth checking the place out.





© SHORELINE AERIAL PHOTOGRAPHY

With more than 500 slips, Somers Cove is the largest state-owned marina in Maryland. The facility can take vessels up to 150 feet LOA.

If you want a night off the boat or have guests visiting take a room at the economical **Capt. Tyler Motel** (701 W Main St.; 410-968-2220), next door to Goldsborough's Marine. The accommodations suit us fine, and the staff is really friendly on every one of our visits — several times a year. A few blocks away, **Capt. Tyler's Crabhouse** (923 Spruce St.; 410-968-1131) is on Somers Cove next to the historical museum. For dessert, you have to try the famous Smith Island cake.

About a quarter-mile from the marinas, there is a post office on Main Street, where you'll also find a pharmacy and **Dollar General** (318 W. Main St.; 410-968-3079), which is across the street from City Hall. **Food Lion** (1 Jacksonville Road; 410-968-1321) is another mile farther away.

### ★ Charts

Use Maptech ChartKit Region 4, Page 39; or Maptech Waterproof Chartbook, Lower Chesapeake Bay, Page 15. Also, NOAA chart 12231 (1:40:000).

### ⚓ Navigation and Anchorages

Your best bet for docking is the 515-slip **Somers Cove Marina** (410-968-0925 or VHF 16), which is owned by the state of Maryland. The controlling depth is 9 feet. Fuel, laundry, pool and Wi-Fi are available here.

**From the north and Tangier Sound**, locate G "9" Q G west of **Janes Island**. Pass to the west of R "8" Fl R 2.5s to avoid a mile of shoaling off of **Island Point**. Stay south of

**Janes Island Light** Fl 4s 37ft 6M and close aboard of G C "1," where you'll turn northeast into the **Little Annemessex River**. Mind your chart and avoid the 6-foot spot near Q R 15ft 4M "2." Follow the markers to Q G 15ft 4M "7" and R "8," where you'll turn northeast once more and head straight for Crisfield. The channel is 8 feet deep to the waterfront.

**From the northeast and the Big Annemessex River**, you can take a shortcut through **Daugherty Creek** and the **Daugherty Creek Canal**, marked to the north by Fl G 4s 19ft 4M "1." Careful: The depth here is maybe 5 feet, but it's shallower at the northern end of the canal at the dogleg near G "WR5" Q G; avoid the shoal by staying off the mark, keeping slightly to the west side of the channel. Once you've gotten inside, there are no other problem areas. The tidal current through the canal can run over a knot.

**From the south**, shallow-draft boats heading to Crisfield from **Pocomoke Sound** (or vice versa) may use **Broad Creek**, which has a controlling depth of 4 feet. Watch for shoaling at both ends and seek local knowledge. Oyster boats running this route help maintain the depths.

### ☎ Shoreside and Emergency Services

**Bus:** Shore Transit 443-260-2300

**Coast Guard:** 911 or VHF 16

**Tow Service:**

—Sea Tow 800-4SEATOW or VHF 16

—TowBoatU.S. 800-391-4869 or VHF 16 ♦